



Médecins Sans Frontières Experience in Treatment as Prevention
Southern African HIV Clinicians Society Conference, September 2014

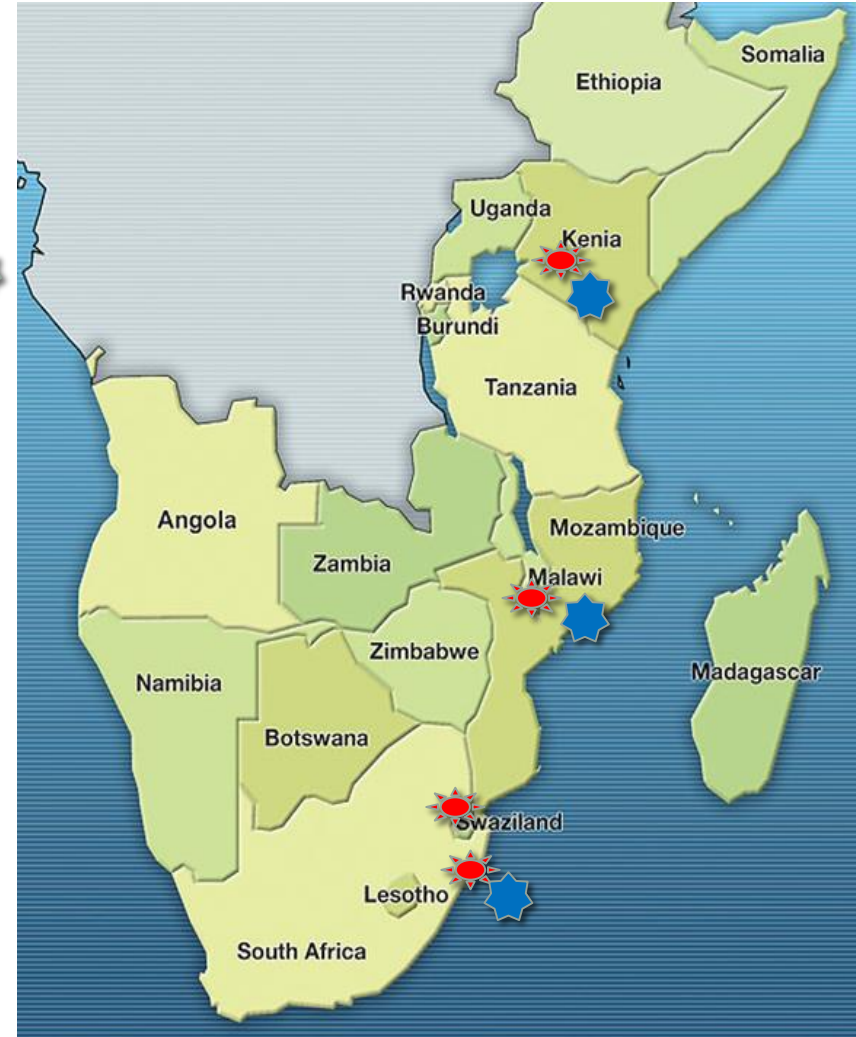
MSF role in Treatment as Prevention

- General: demonstrating feasibility/acceptability
- Test, link, treat, retain, with undetectable viral load
- Pilot new interventions & models in high coverage settings:
- Recent evaluations through population surveys



Treatment as Prevention Projects

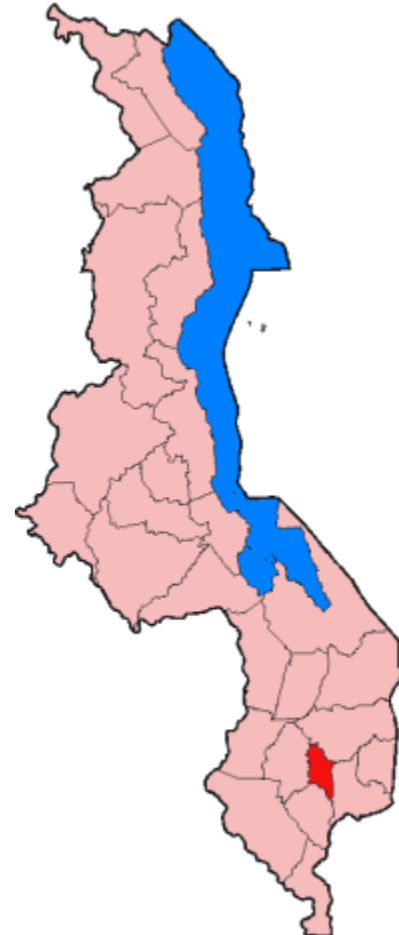
- **Chiradzulu (Malawi)** 
 - MSF/MOH HIV program
 - MSF support for 13 years
- **Kwazulu-Natal BTC (South Africa)** 
 - MOH HIV program
 - MSF gradual support since 2011
- **Shiselweni (Swaziland)**
 - MOH with MSF support since 2008
 - Test & Treat planned for Nhlangano
- **Ndhiwa (Kenya)** 
 - MOH/Other NGO HIV program
 - No MSF presence yet



 Recent HIV Impact in Population Survey (incidence, prevalence, coverage)

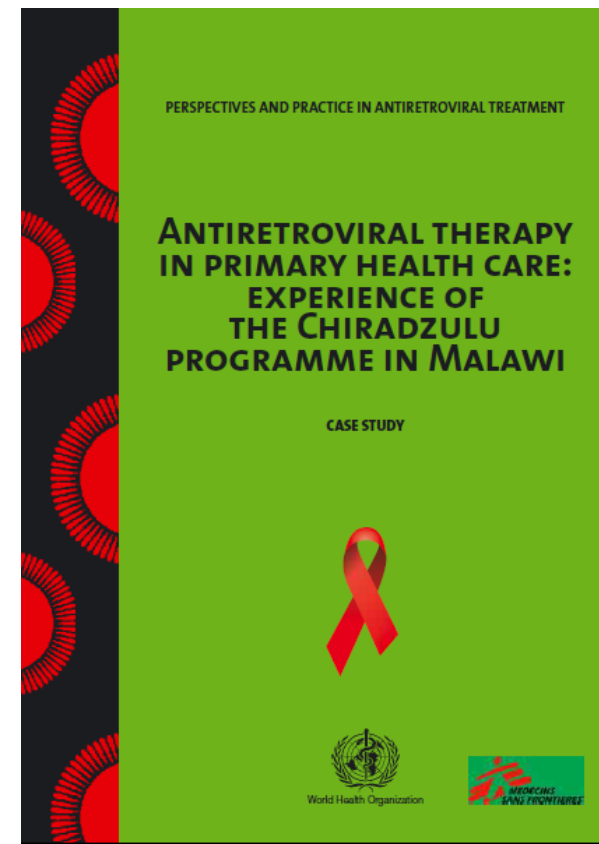
Chiradzulu

- Southern region of Malawi
- Population: 288,546 (2008 census)
- Health services:
 - 1 District Hospital
 - 2 Private Clinics
 - 10 Health Centers



Chiradzulu

- 1997: MSF opens programme
- 2001: First patients on ART
- 2003: Decentralisation to 10 health centres
- 2004: Task-shifting to nurses and counsellors (NiMART)
- 2008: 6-monthly clinic visits for stable patients
- 2012: Circumcision project
- 2013: 27,000 on ART



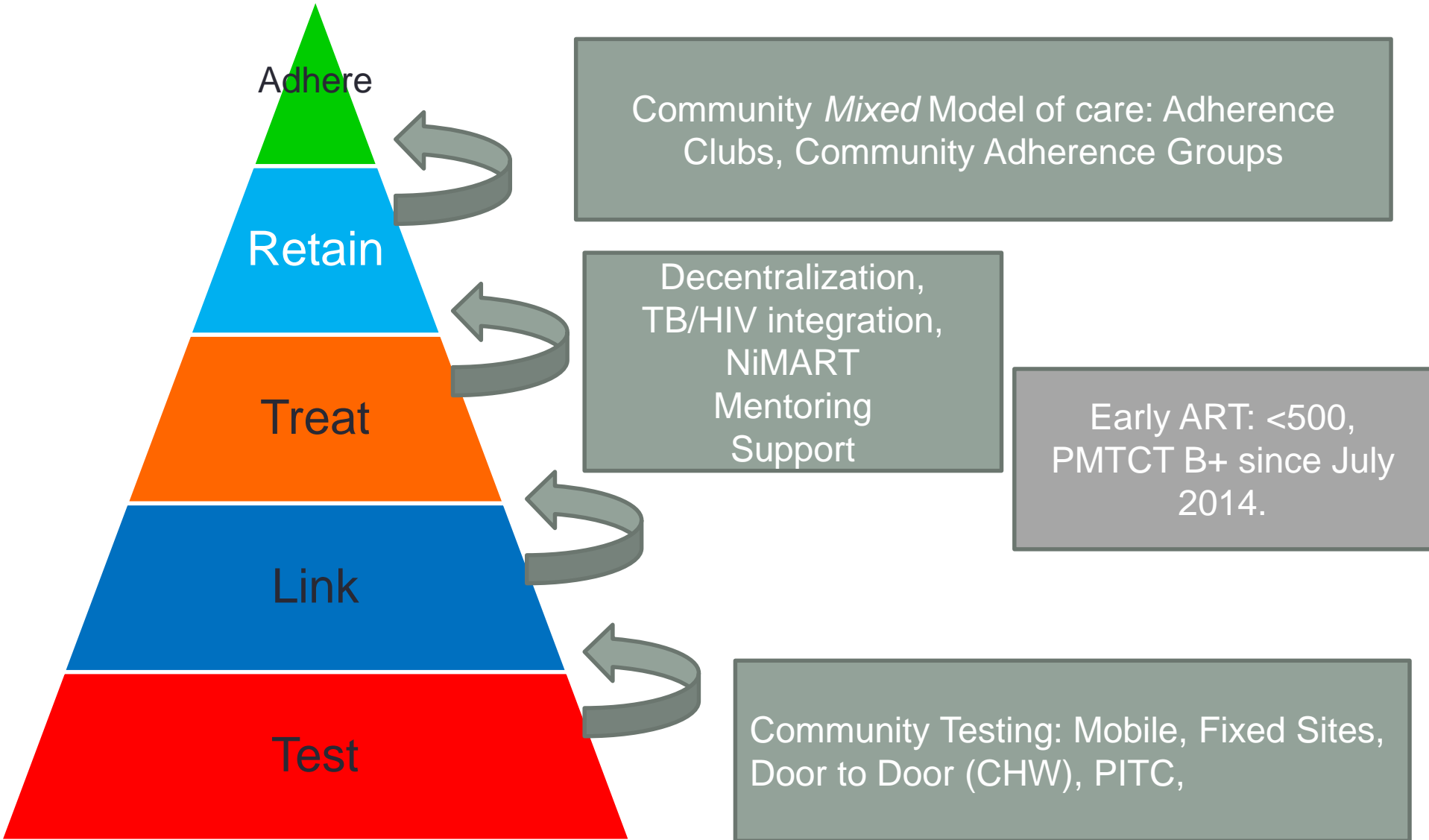
KZN - Mbongolwane and Eshowe



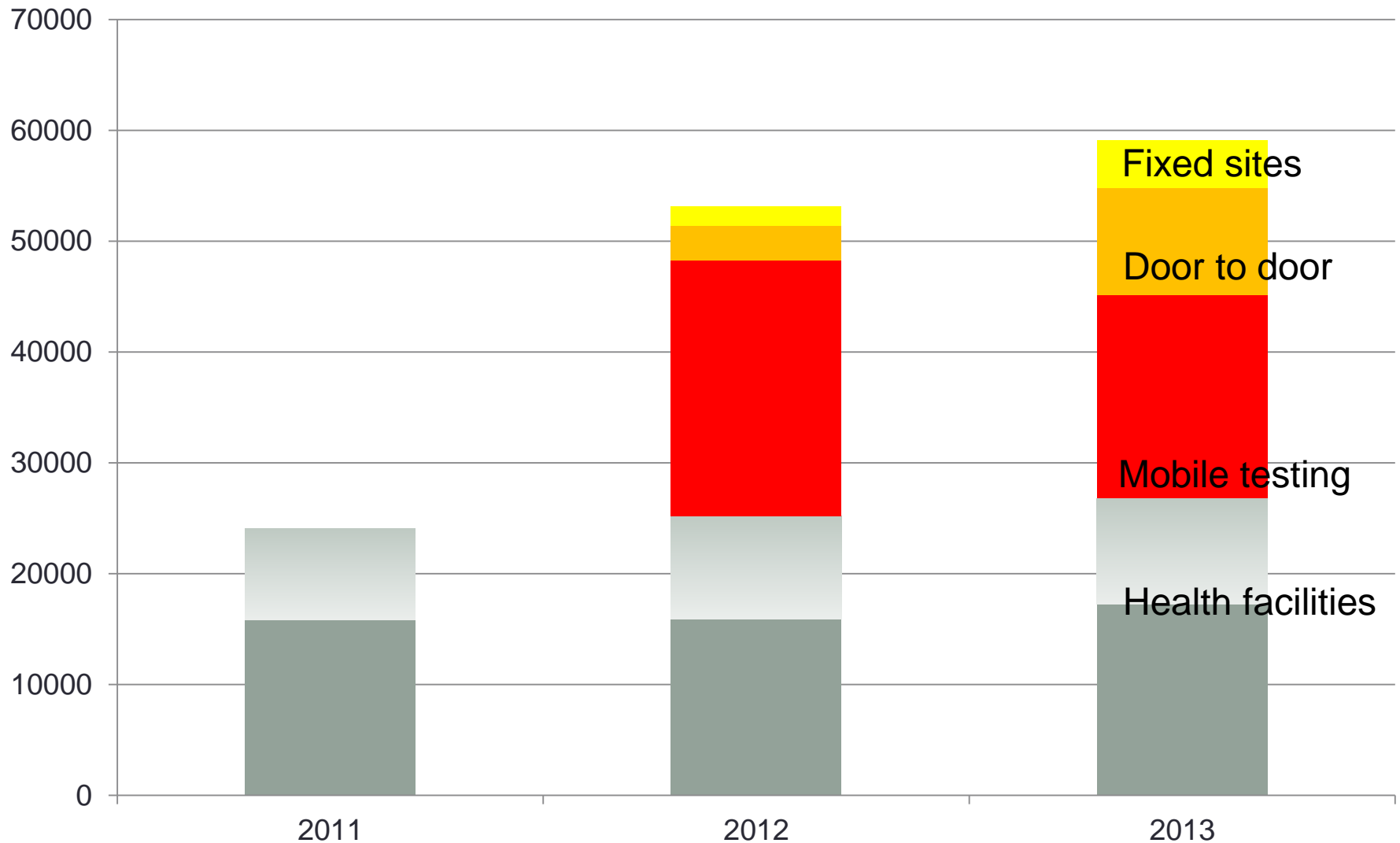
- Population: 115,000
- Rural, urban & farms
- 2 hospitals & 10 PHC clinics
- Objectives:
 - Reduce HIV/TB incidence and associated mortality & morbidity
 - Demonstrate successful strategies for testing, treatment and prevention of HIV and TB.



KZN - Aim: Bend the Curves

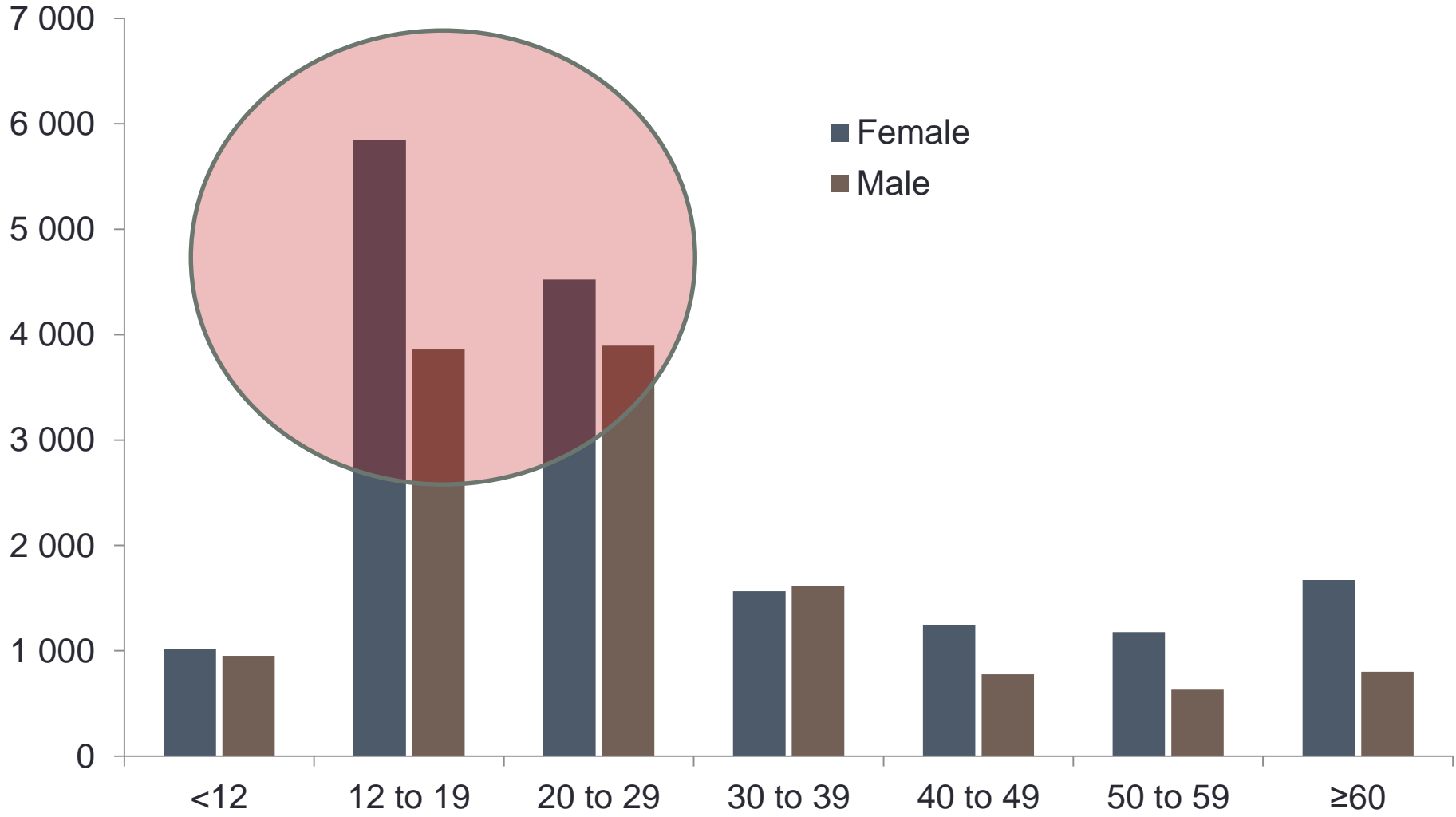


Increase in HTC with community testing

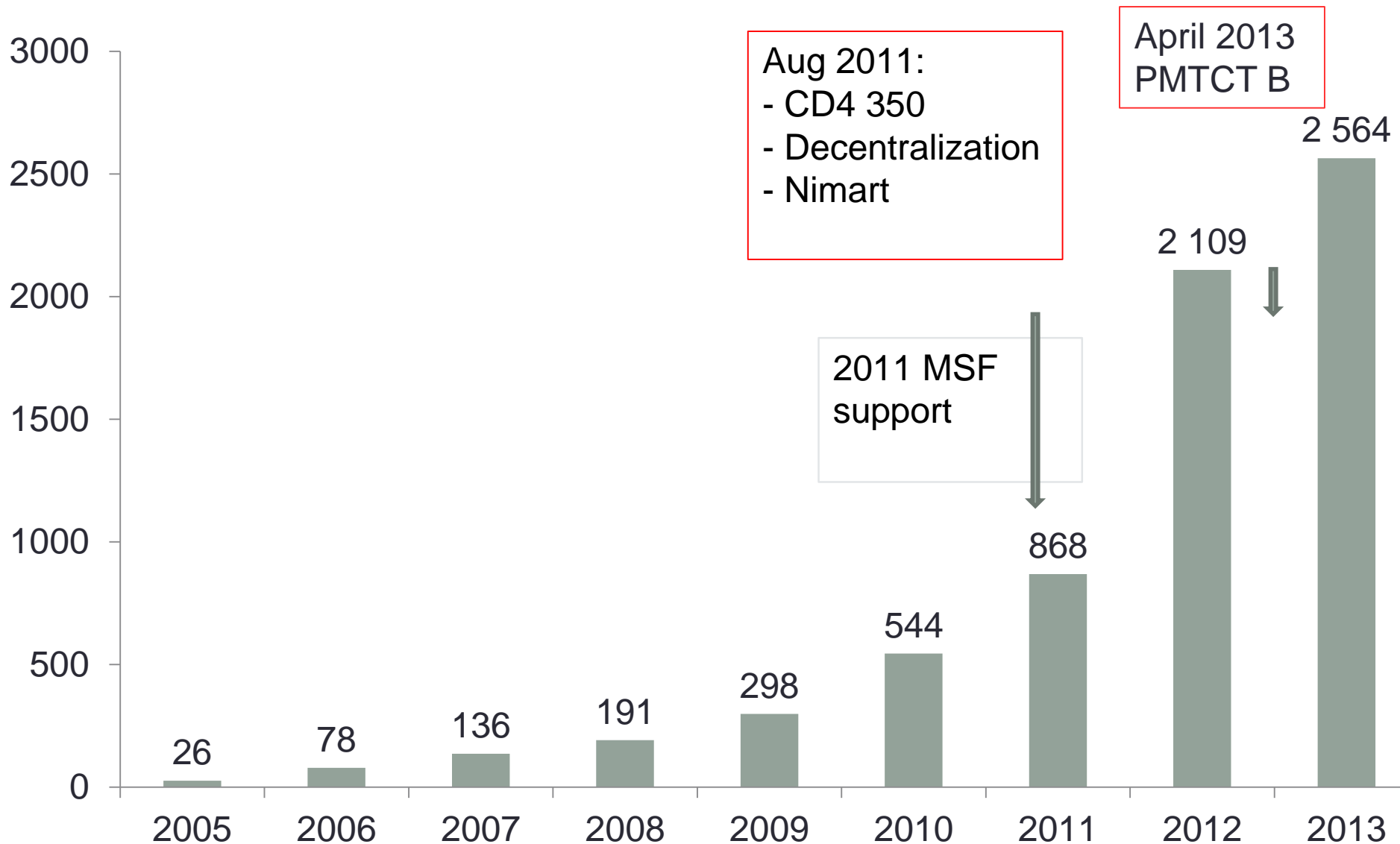


Community & School Testing to Reach Youth

Community tests in 2013

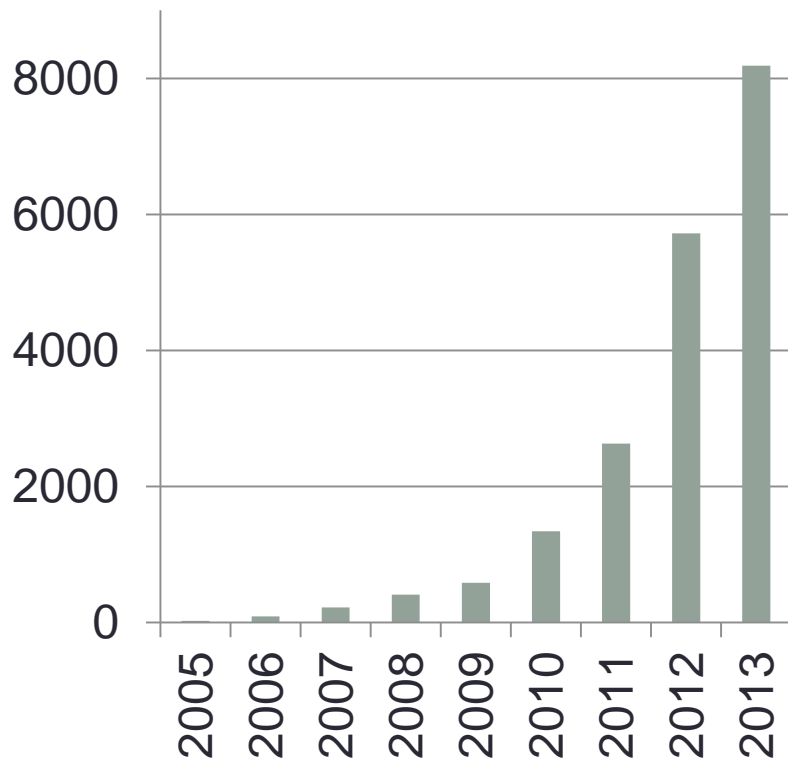


Increase in annual ART initiations

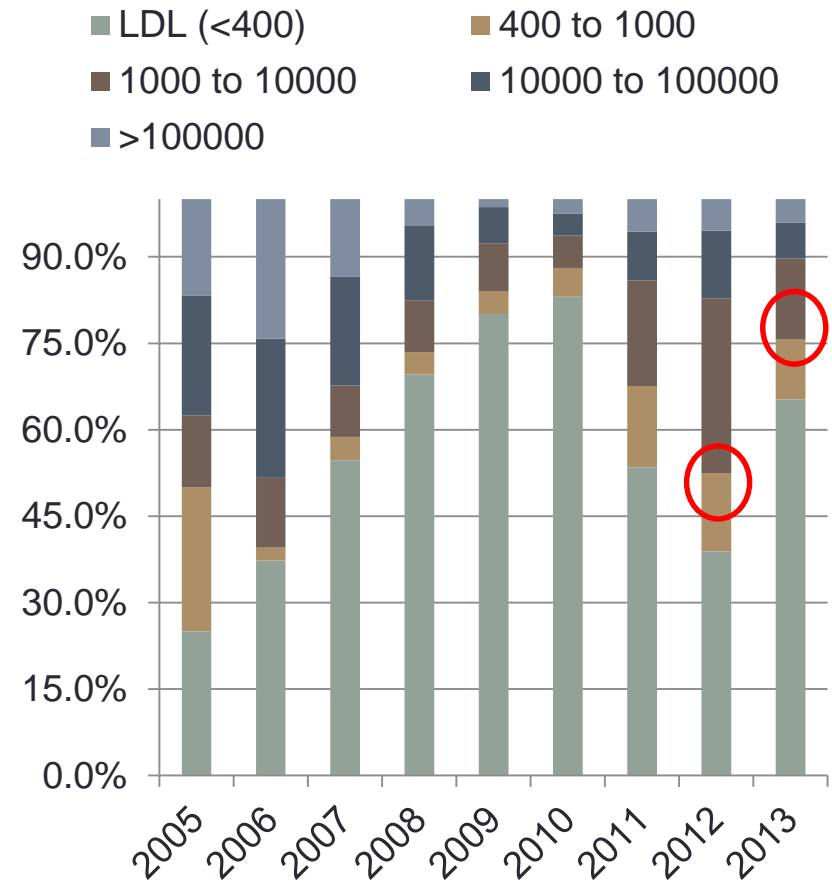


Improve virological monitoring and outcomes

Viral loads done



Viral load results



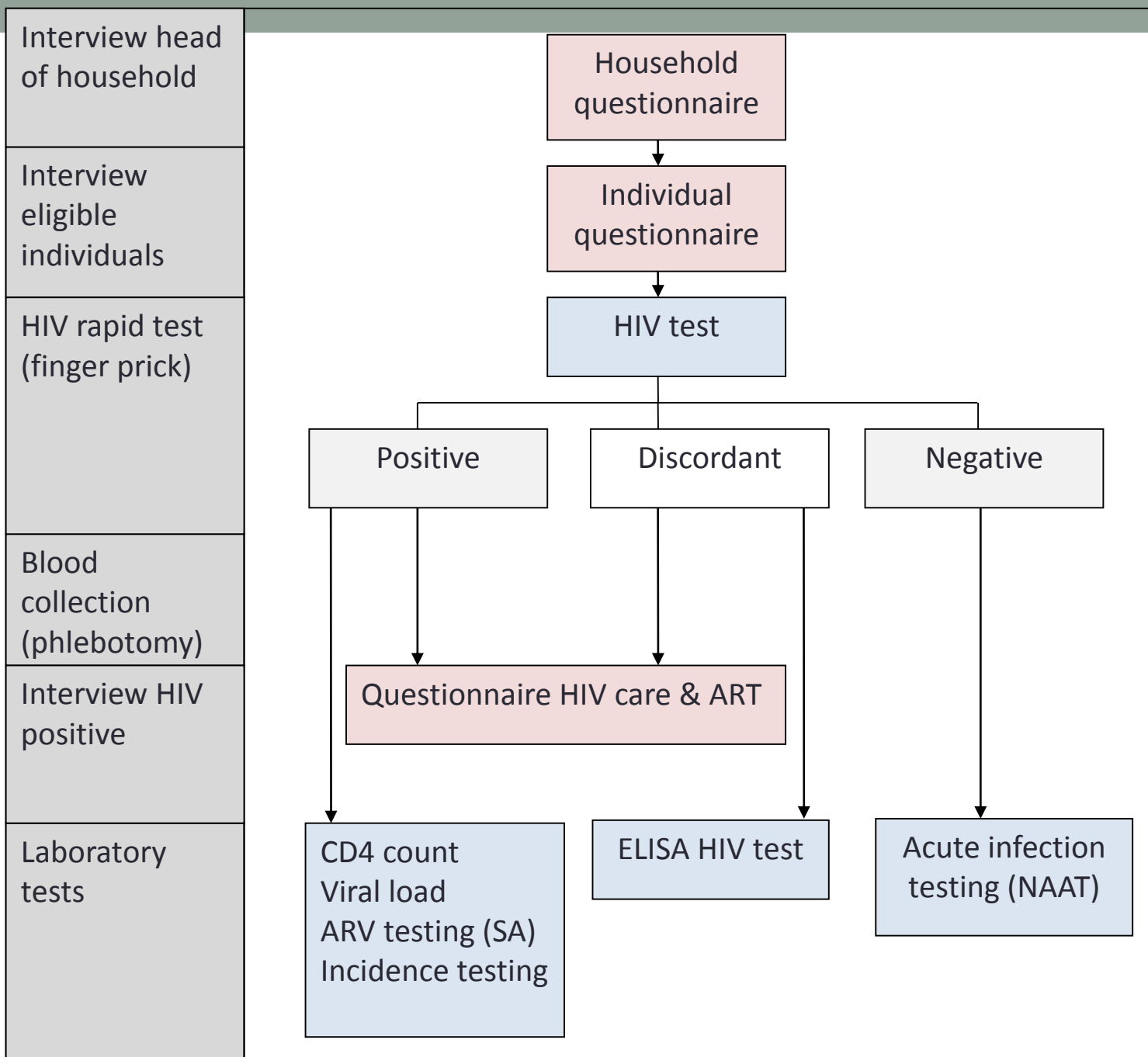
PMTCT B = B+...

- 99% of HIV+ pregnant women initiated on ART
- 6 week PCR+: 2.9% in 2012 to 2.2% in 2013
- Increased HIV testing at 18 months
- Retention on ART at 6 month was 87% in patients with CD4 <350 vs. 63% with CD4 >350 (p<0.001).
- 68% retained in care at 6 months had a viral load recorded;
- 89% of these were <400 copies/ml.



HIV incidence and cascade of care: findings from three population-based studies

Methods Study Procedures



Results

9,802 HH visited → 21,798 indiv. eligible → 18,999 (87.2%) included

- Kenya: 6077/6833 (88.9%)
- South Africa: 5649/6688 (84.5%)
- Malawi: 7273/8277 (87.9%).

Table: Participants' socio-demographic characteristics

Women, n (%)	11550	60.8
Age, median years (IQR)	28	20-40
Married, n (%)	9983	52.6
Primary education, n (%)	12092	63.7
Student/unemployed, n (%)	7571	39.8

HIV incidence

	Kenya		South Africa		Malawi	
	/100 PY	95%CI	/100 PY	95%CI	/100 PY	95%CI
Women	2.7	(1.6-3.9)	1.6	(1.1-3.2)	0.7	(0.1-1.3)
Men	1.3	(0.4-2.3)	0.6	(0.0-1.4)	0.1	(0.0-0.4)
Overall	2.2	(1.3-3.1)	1.4	(0.6-2.3)	0.4	(0.0-0.8)

PY: persons-year

Women 15-29 years:

- Kenya: 3.8 /100 PY (95%CI: 2.1-5.5)
- South Africa: 3.2 /100 PY (95%CI: 1.4-4.9)
- Malawi: 0.9 /100 PY (95%CI: 0.1-1.7)

HIV incidence

	Kenya		South Africa		Malawi	
	/100 PY	95%CI	/100 PY	95%CI	/100 PY	95%CI
Women	2.7	(1.6-3.9)	1.6	(1.1-3.2)	0.7	(0.1-1.3)
Men	1.3	(0.4-2.3)	0.6	(0.0-1.4)	0.1	(0.0-0.4)
Overall	2.2	(1.3-3.1)	1.4	(0.6-2.3)	0.4	(0.0-0.8)

PY: persons-year

Women 15-29 years:

- Kenya: 3.8 /100 PY (95%CI: 2.1-5.5)
- South Africa: 3.2 /100 PY (95%CI: 1.4-4.9)
- Malawi: 0.9 /100 PY (95%CI: 0.1-1.7)

HIV incidence

	Kenya		South Africa		Malawi	
	/100 PY	95%CI	/100 PY	95%CI	/100 PY	95%CI
Women	2.7	(1.6-3.9)	1.6	(1.1-3.2)	0.7	(0.1-1.3)
Men	1.3	(0.4-2.3)	0.6	(0.0-1.4)	0.1	(0.0-0.4)
Overall	2.2	(1.3-3.1)	1.4	(0.6-2.3)	0.4	(0.0-0.8)

PY: persons-year

Women 15-29 years:

- Kenya: 3.8 /100 PY (95%CI: 2.1-5.5)
- South Africa: 3.2 /100 PY (95%CI: 1.4-4.9)
- Malawi: 0.9 /100 PY (95%CI: 0.1-1.7)

HIV incidence

	Kenya		South Africa		Malawi	
	/100 PY	95%CI	/100 PY	95%CI	/100 PY	95%CI
Women	2.7	(1.6-3.9)	1.6	(1.1-3.2)	0.7	(0.1-1.3)
Men	1.3	(0.4-2.3)	0.6	(0.0-1.4)	0.1	(0.0-0.4)
Overall	2.2	(1.3-3.1)	1.4	(0.6-2.3)	0.4	(0.0-0.8)

PY: persons-year

Women 15-29 years:

- Kenya: 3.8 /100 PY (95%CI: 2.1-5.5)
- South Africa: 3.2 /100 PY (95%CI: 1.4-4.9)
- Malawi: 0.9 /100 PY (95%CI: 0.1-1.7)

HIV prevalence

	Kenya		South Africa		Malawi	
	%	(95%CI)	%	(95%CI)	%	(95%CI)
Women	26.8	(25.3-28.1)	30.9	(29.0-32.9)	19.6	(16.1-17.9)
Men	19.8	(18.0-21.3)	15.9	(14.0-18.0)	13.2	(12.0-14.4)
Overall	24.1	(22.9-25.2)	25.2	(23.6-26.9)	17.0	(16.1-17.8)

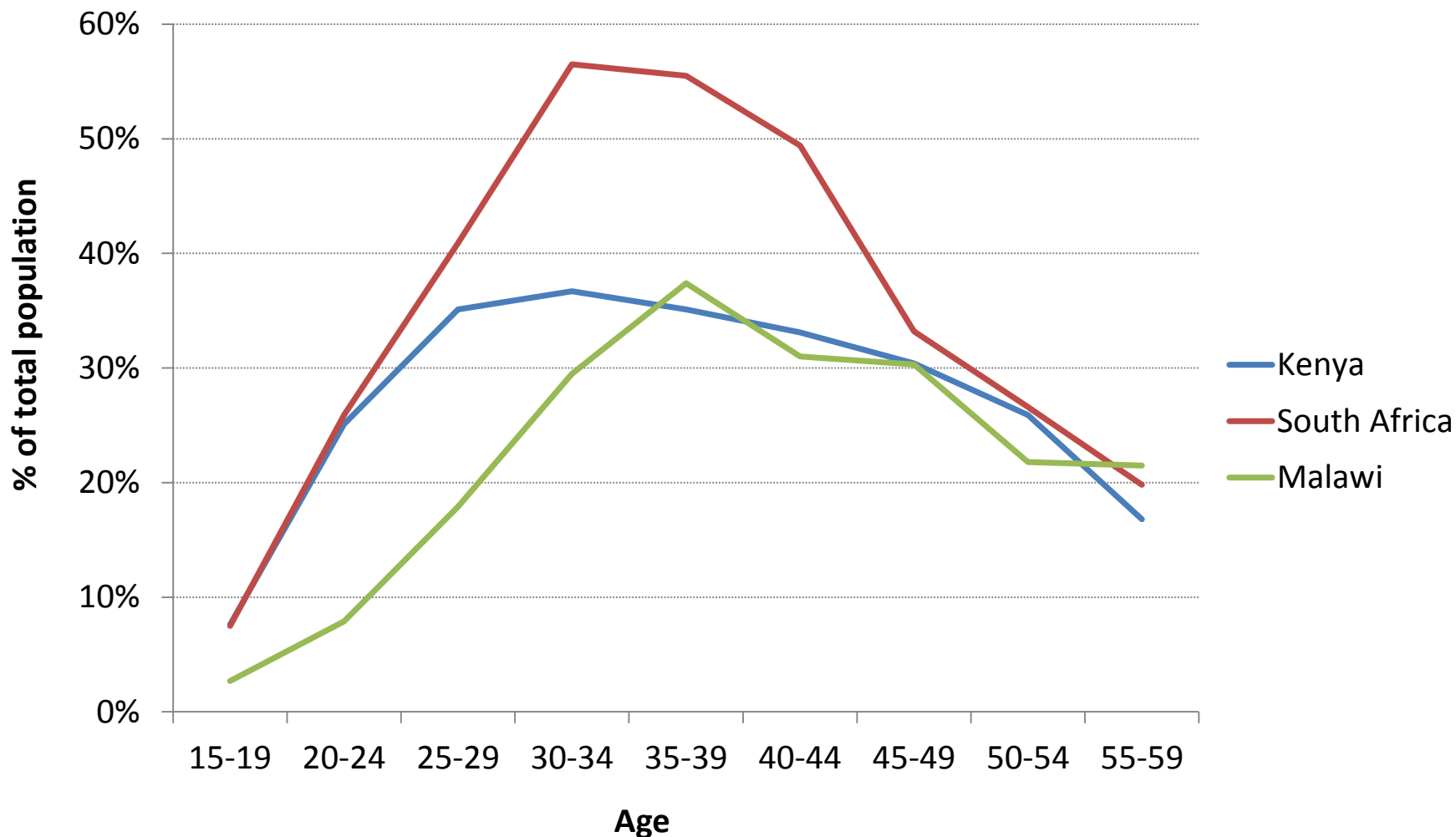
HIV prevalence

	Kenya		South Africa		Malawi	
	%	(95%CI)	%	(95%CI)	%	(95%CI)
Women	26.8	(25.3-28.1)	30.9	(29.0-32.9)	19.6	(16.1-17.9)
Men	19.8	(18.0-21.3)	15.9	(14.0-18.0)	13.2	(12.0-14.4)
Overall	24.1	(22.9-25.2)	25.2	(23.6-26.9)	17.0	(16.1-17.8)

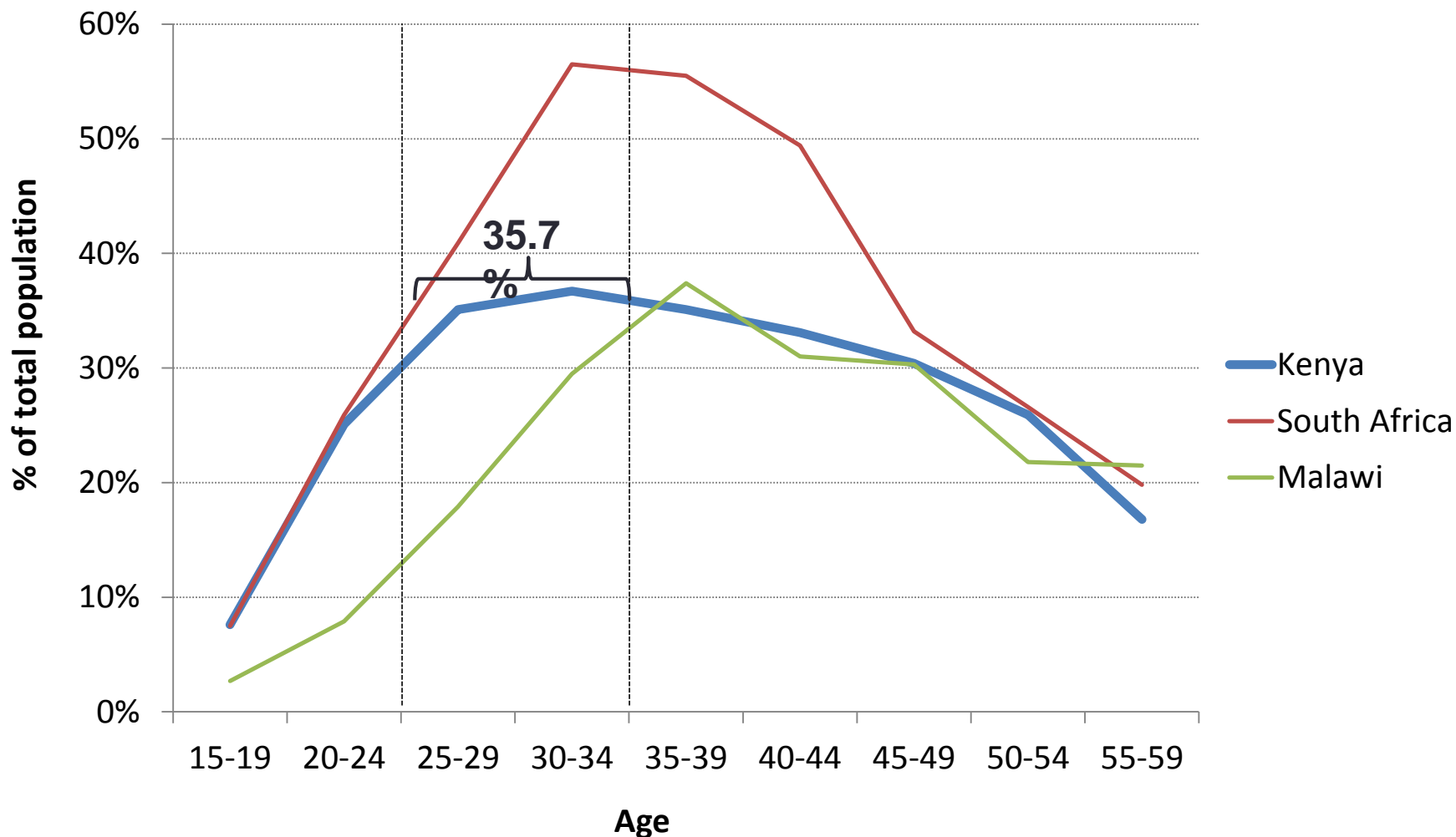
HIV prevalence

	Kenya		South Africa		Malawi	
	%	(95%CI)	%	(95%CI)	%	(95%CI)
Women	26.8	(25.3-28.1)	30.9	(29.0-32.9)	19.6	(16.1-17.9)
Men	19.8	(18.0-21.3)	15.9	(14.0-18.0)	13.2	(12.0-14.4)
Overall	24.1	(22.9-25.2)	25.2	(23.6-26.9)	17.0	(16.1-17.8)

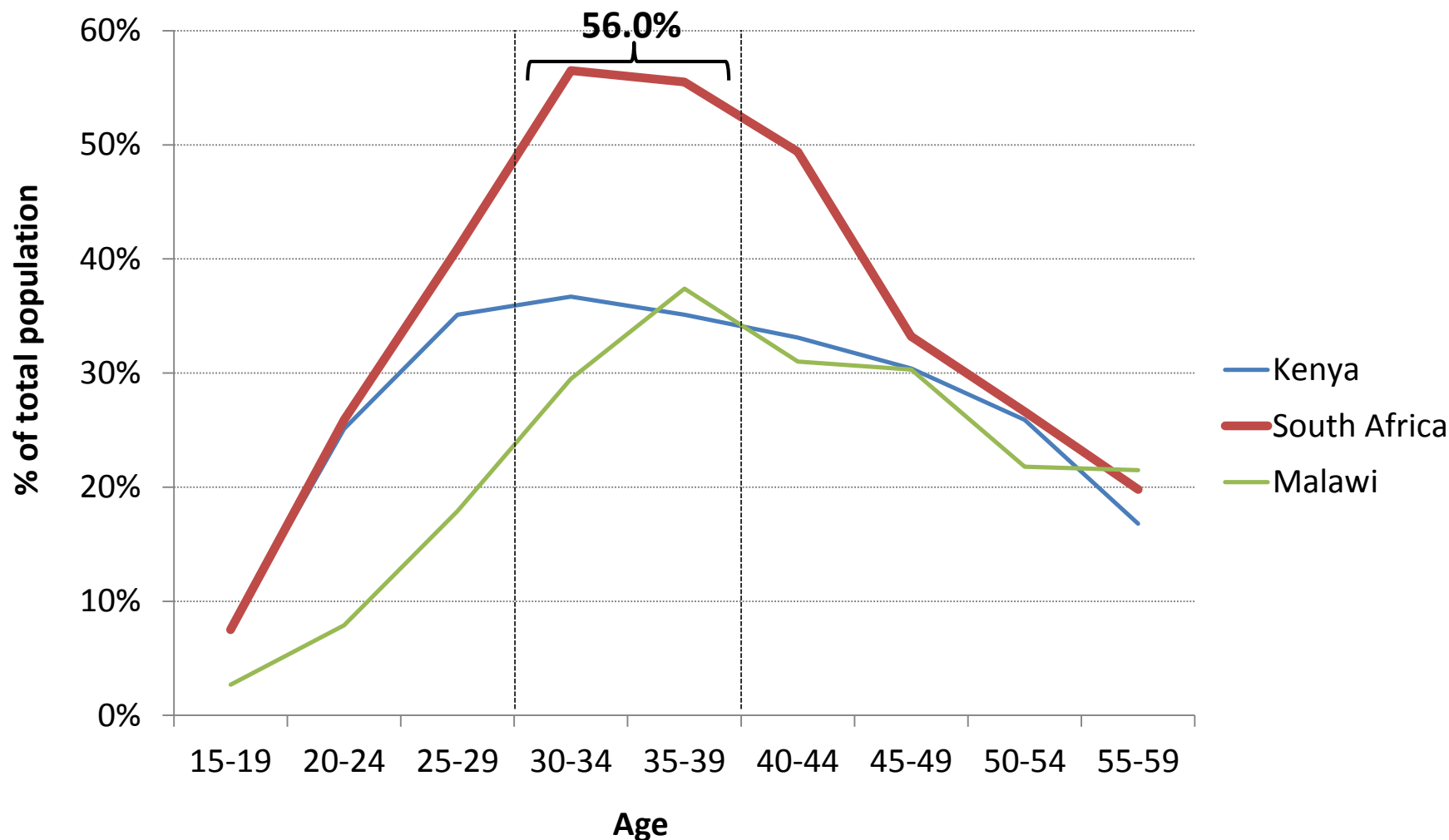
HIV prevalence - Women



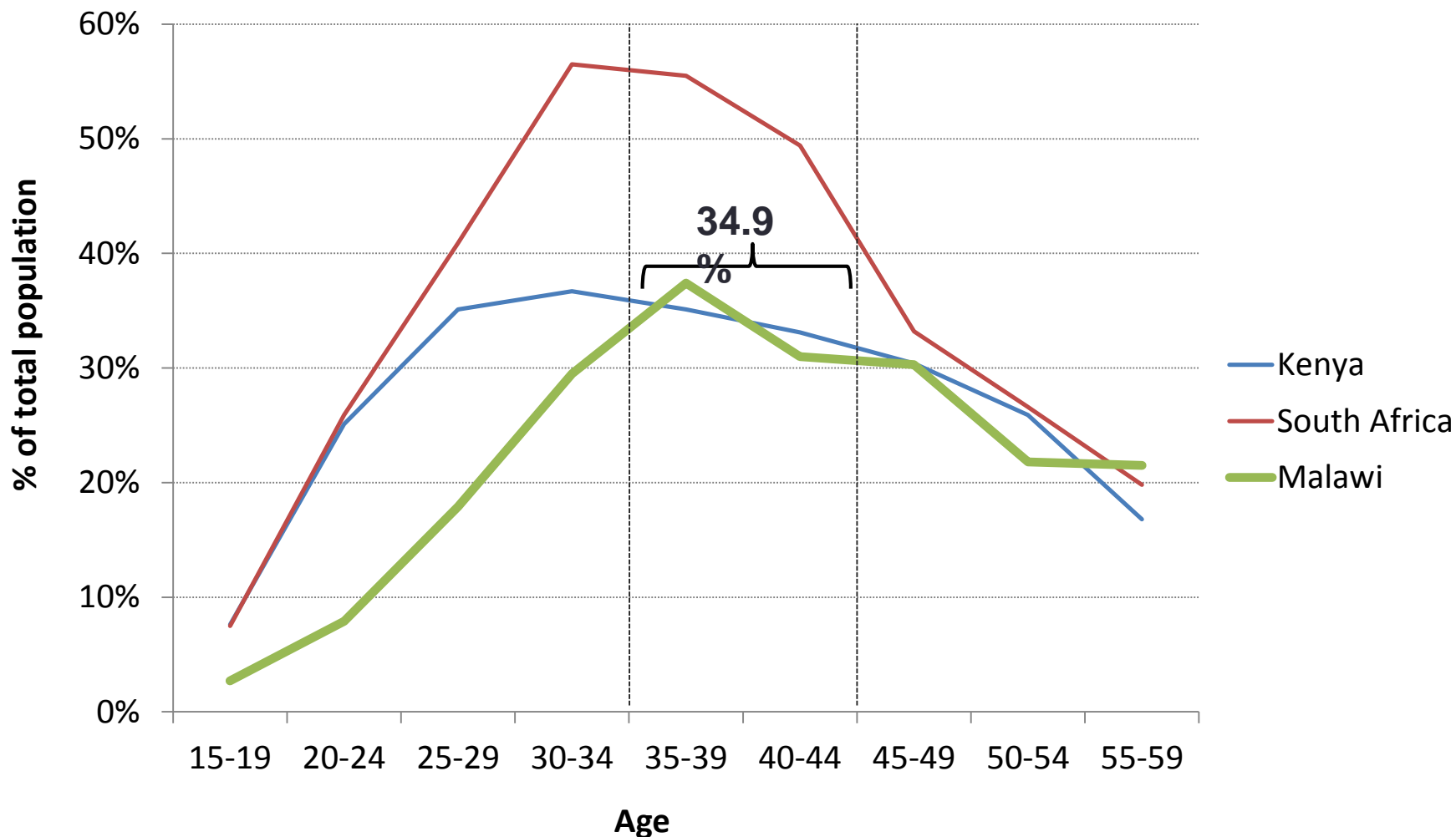
HIV prevalence - Women



HIV prevalence - Women



HIV prevalence - Women



ART coverage

	Kenya HIV+=1457	South Africa HIV+=1493	Malawi HIV+=1190
Current National Guidelines	CD4<350 PMTCT A	CD4<350 PMTCT B	CD4<350 PMTCT B+
Eligible, n (%)	826 (60.0)	988 (69.4)	952 (80.0)
ART coverage, n (%)	582 (68.7)	741 (75.0)	766 (80.4)

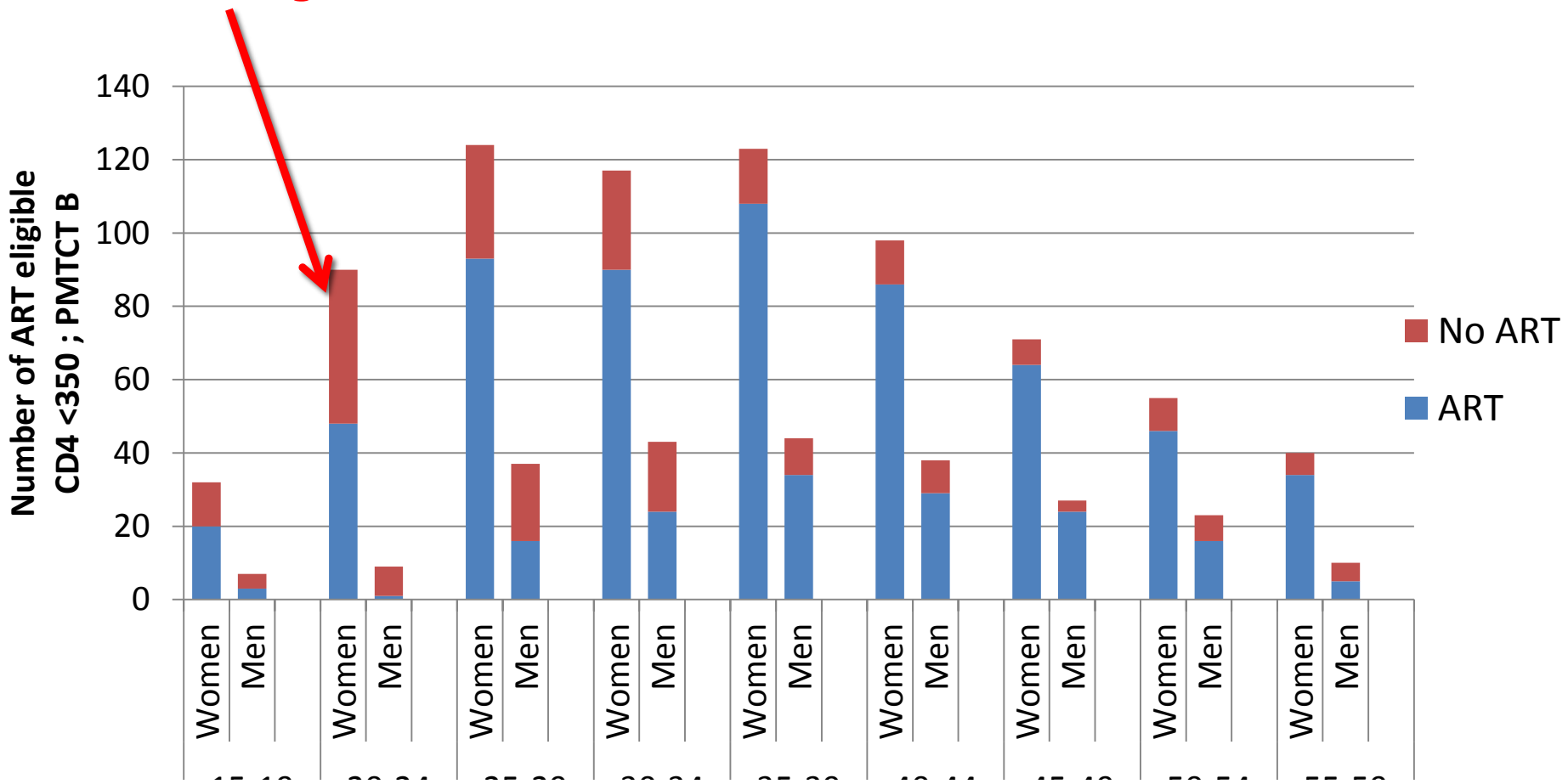
ART coverage

	Kenya HIV+=1457	South Africa HIV+=1493	Malawi HIV+=1190
Current National Guidelines	CD4<350 PMTCT A	CD4<350 PMTCT B	CD4<350 PMTCT B+
Eligible, n (%)	826 (60.0)	988 (69.4)	952 (80.0)
ART coverage, n (%)	582 (68.7)	741 (75.0)	766 (80.4)
2013 WHO Guidelines	CD4<500 / PMTCT B+		
Eligible, n (%)	1127 (81.0)	1152 (80.9)	1041 (87.5)
ART coverage, n (%)	582 (50.5)	741 (64.3)	766 (73.5)

KZN ART coverage

Overall: 75.0% (95%CI: 72.0-77.8) - **Women: 78.5% (95%CI: 75.8-81.0)**
 - **Men: 63.9% (95%CI: 56.7-70.5)**

Women age 20-24: 42%



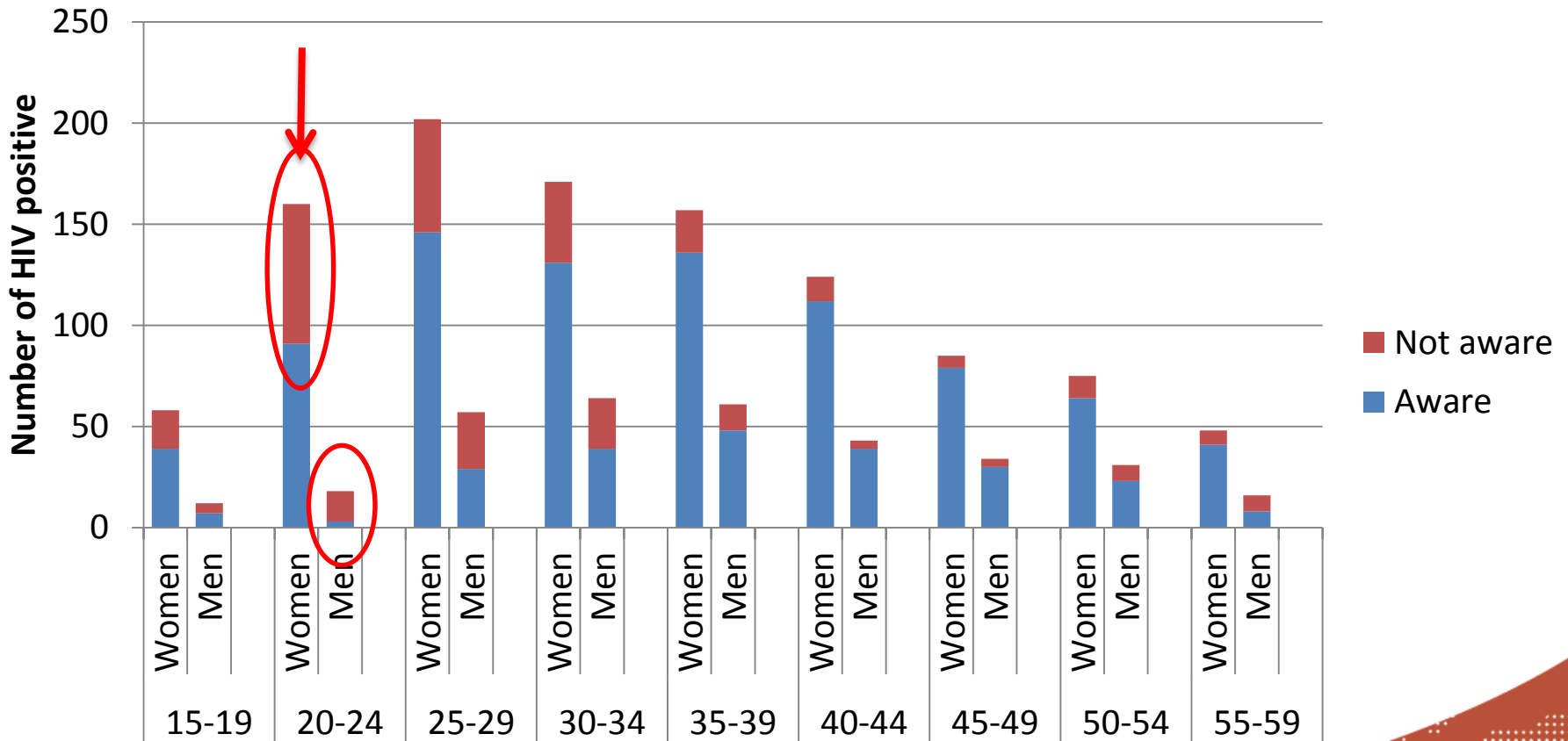
Who was already aware of their HIV infection?

Awareness: 75.2% (95%CI:72.9-77.4)

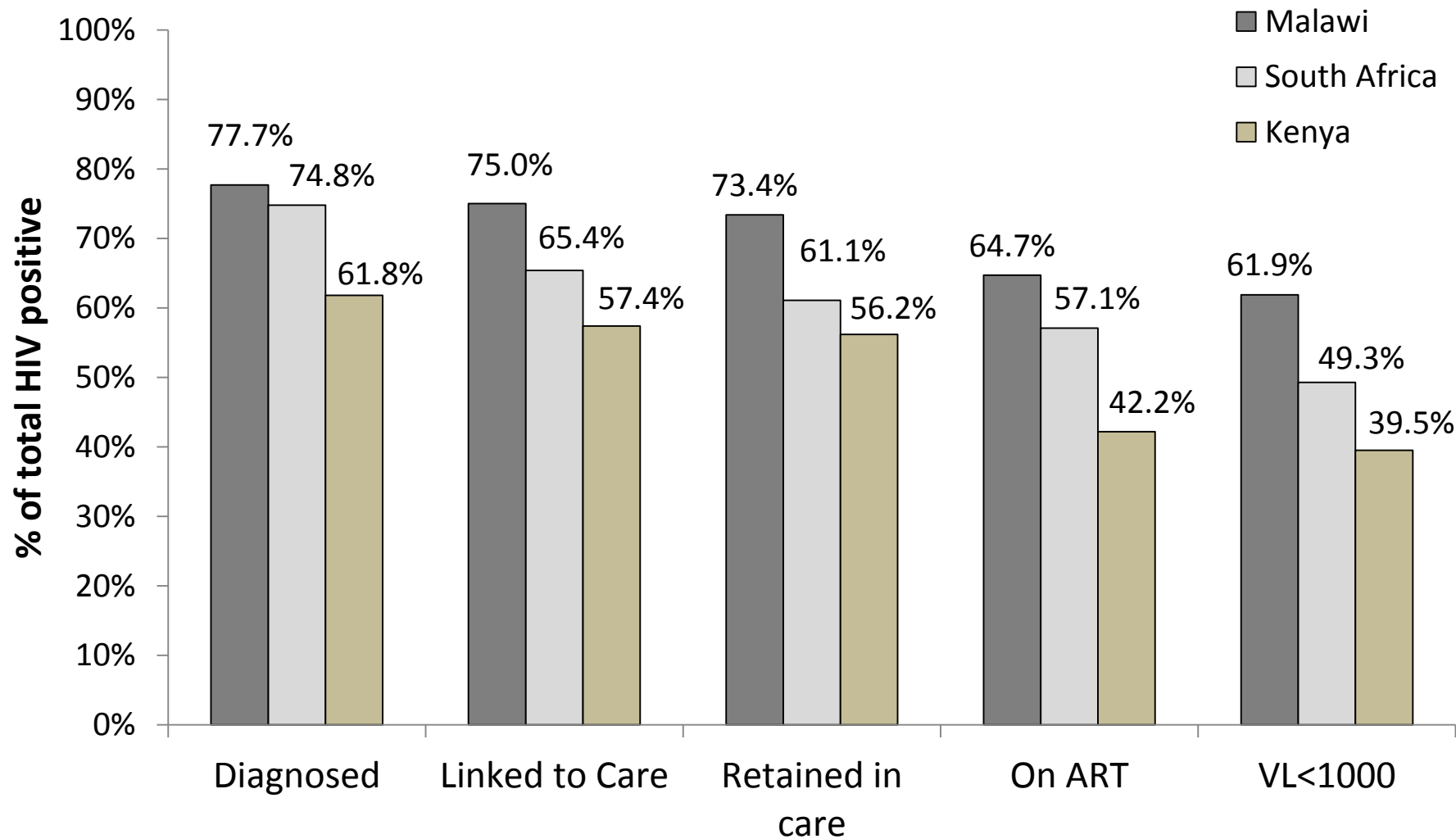
- Women: 77.7% (95%CI: 75.1-80.1)

Women & men 20-24 y: 43.1% & 83.3% were unaware of their HIV infection.

- Men: 67.3% (95%CI: 62.0-72.1)

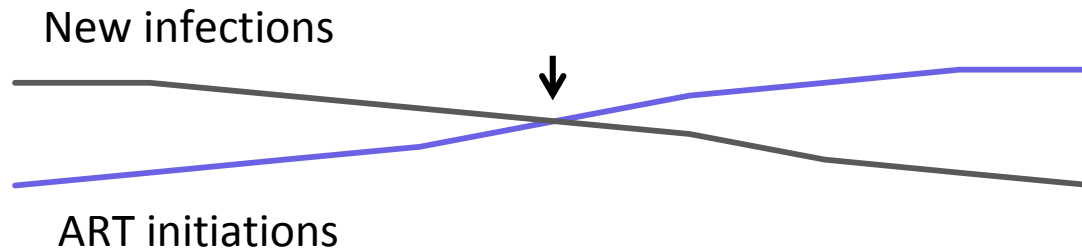


Cascade of care



Tipping point

« **Tipping Point** » : When ART initiations go over new infections



	Kenya N=76,880	South Africa N=61,179	Malawi N=139,484
New infections ¹	641	320	225
ART initiations ¹	1,338	894	921
Tipping point ratio	2.1	2.8	4.1

1. During the 6 months prior to survey date

Getting ahead of the wave...



Conclusions

- We are already treating our way out of the epidemic.
- Scale up without messing up
- Key to develop specific interventions across the cascade:
 - Test, link, treat low coverage groups, especially youth
 - Simplify (FDC, minimal lab, 6-monthly or annual visits...)
 - Community-based & patient centred interventions
 - Adherence support
 - Quality & M&E improvement
- Huge need for community mobilisation will not be met without investing in civil society.

SAVE TAC, SAVE LIVES



**SOUTH AFRICA NEEDS TAC
NOW MORE THAN EVER!**

Donate TODAY!

www.tacgivengain.org

Acknowledgements

Ndhiwa, Chiradzulu, Kwazulu-Natal & Shiselweni communities, patients and health care teams (DoH & MSF).

Kenya/Malawi survey team

Sophie Masson

Isaac Nabaasa

May Atieno

Patrick Ochoro

Field teams

South Africa survey team

Malika Bouhenia

Radoslav Antonov

Nomsa Nzama

Godwin Dube

Field teams

MSF Geneva

Roger Teck

MSF Kenya

William Hennequin

Beatrice Kirubi

Ali Ouattara

MSF Malawi

C. Masiku

J. Price

MSF South Africa

Andrew Mews

Amir Shroufi

Ruggero Guilliani

Mathew Reid

Emilie Venables

Emilie Wang

MSF SAMU South Africa

Tom Ellman

Eric Goemaere

Emmanuel Fajardo

Carole Metcalf

Kemri/CDC Kisumu

Clement Zeh

Andrea Kim

MoH Kenya

Irene Mukui

Ojwang Lusi

MoH Malawi

Davie Zolowere

Benson Chilima

NICD Johannesburg

Adrian Puren

MSF Paris

Elisabeth Szumilin

Annette Heinzelman

Leon Salumu

Pierre Mendiharat

MSF Brussels

Marc Biot

Epicentre Paris

Helena Huerga

David Maman

Jean-François Etard

Serge Balandine

Jihane Ben Farhat

Stephane Crisan

Biostatic Unit Lyon

Benjamin Riche

René Ecochard

Stéphanie Blaizot

IRD, Montpellier

Martine Peeters

Eric Delaporte

A. Aghokeng

SACEMA Stellenbosch

Alex Welte

University of Cape Town

Jennifer Norman

Global Laboratory Durban

Madurai Lorna

Bronwyn Pitam

Collin Pillay